

## 8. Janet Parker Laird

### Ceramics

Ceramic Artist

Janet was originally a Poole Pottery artist.

Inspiration comes this year from sketches made on a trip to NZ and later used with the colour mix of glaze on an array of pots and plates in various sizes.

Studio, workshop and garden on display.



**Directions:** A354 Blandford to Salisbury. In Pimperne left to Stourpaine, first left, travel to the end of road into Chapel Lane, left again, 2nd house on left.

**Accessibility:** Gravel drive, one small step.

**Opening Hours:** Daily 10am-4pm

Elm Tree Cottage, Priory Gardens, Pimperne, Blandford Forum, DT11 8XH

Tel: 01258 455187

E: [janetparker@btinternet.com](mailto:janetparker@btinternet.com)

W: [www.janetparkerlaird-ceramicartist.blogspot.com](http://www.janetparkerlaird-ceramicartist.blogspot.com)

## 10. Simon Polkinghorn

Drawings and paintings mainly of the human form and animals using pastels, charcoal, oils and mixed media. Expressive style, sometimes bordering on abstract.



**Directions:** Take B3082 to Tarrant Keyneston, opposite the Pub take the turning signposted to Tarrant Crawford, after half a mile turn right into St Richards Close.

**Accessibility:** Off road parking, several steps to venue.

**Open:** Sat. 25<sup>th</sup>, Sun. 26<sup>th</sup>, Sun 27<sup>th</sup> May. Sat. 1<sup>st</sup> and Sun. 2<sup>nd</sup> 10am-5pm.

11 St Richards Close, Tarrant Keyneston, Blandford Forum, Dorset, DT11 9JD

Tel: 01258 452213

Mob: 07910 953383

Email: [s.polkinghorn@btinternet.com](mailto:s.polkinghorn@btinternet.com)

## 9. Claire Thomas

Paintings of the Blackmore Vale and Cranborne Chase. Studio, house and garden open. Pubs nearby.



### Directions:

A354, Blandford to Salisbury Road. 1st left after Farquharson Arms (from Blandford) or 2nd right after Anvil Inn (from Salisbury). Easy parking on road.

**Accessibility:** Flat to exhibition, 3 steps studio.

**Open:** Sat. 25<sup>th</sup>, Sun. 26<sup>th</sup>, Mon. 27<sup>th</sup> May, Sat. 1<sup>st</sup>, Sun. 2<sup>nd</sup> June. 10am-4.30pm.

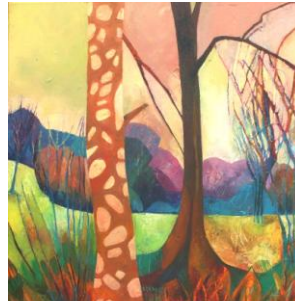
2 Berkeley Cottages, Church Road, Pimperne, Blandford Forum, Dorset, DT11 8UA  
Telephone: 01258 456474

E: [clairethomas2010@hotmail.co.uk](mailto:clairethomas2010@hotmail.co.uk)

W: [www.clairethomas.co.uk](http://www.clairethomas.co.uk)

## 11. Clare Shepherd Painting

Open studio, house and Gallery at Minchington, near Cashmoor. Large oil paintings of Cranborne Chase.



**Directions:** A354 to Cashmoor, at The Inn on Chase turn to Gussage St. Andrew, half-mile, through S-bend, immediately left up farm track (Myncen Farm). Field parking at house plus, **more parking beyond farm entrance**; bear right, over small bridge, large lay-by beside unused gates, lovely 3-minute walk.

**Accessibility:** Limited; many steps and graveled areas

**Open:** Sat. 25<sup>th</sup>, Sun. 26<sup>th</sup>, and Mon. 27<sup>th</sup> May. Sat 1<sup>st</sup> and Sun 2<sup>nd</sup> June. 10am-4pm.

82 Minchington, Nr. Blandford, DT11 8DH

Tel: 01725 552406 Mob: 07748 113152

Email: [clare.shep@btinternet.com](mailto:clare.shep@btinternet.com)

Web: [www.clareshepherd.com](http://www.clareshepherd.com)

# Art Trail

## New Dorset Art Group

## Summer Art Trail

## May 25<sup>th</sup> - June 2<sup>nd</sup> 2013

11 artists, living and working in or near

Blandford Forum, open their studios to visitors.

All Welcome.

[www.newdorsetartgroup.co.uk](http://www.newdorsetartgroup.co.uk)

## 1. Orsola Adlem



Printmaker, Working studio. Ongoing demonstration of printmaking. Exciting exhibition of prints with a diverse mix of subjects inspired by nature and travel. Also work in oils on show.

White Horse Inn nearby serving good food.

**Directions:** A350 Blandford to Stourpaine. 25m past White Horse Inn and South Holme Road. Entrance on left opposite village hall sign. Parking on drive. A good resting point on the Blandford to Sturminster Trailway

**Open:** Daily 10am-4pm

**The Laurels**, South Holme, Stourpaine  
Nr. Blandford, Dorset DT11 8TG

Tel: 01258 454574

Email: [orsola.adlem@hotmail.com](mailto:orsola.adlem@hotmail.com)

## 2. David Norton

Painting

David Norton is a musician who paints simple and direct oil paintings of landscapes in Dorset and France, portraits and still-lives.



### Directions:

Leave Blandford on the Salisbury road and take second on right, after traffic lights, into Albert street. House is on right at junction of Albert St and Alexandra Street.

**Open:** Sat 25<sup>th</sup> Sun 26<sup>th</sup> Mon 27<sup>th</sup> May, Sat 1<sup>st</sup> and Sun 2<sup>nd</sup> June from 10.00am to 5.00pm each day.

**20 Alexandra Street,**  
Blandford, DT11 7JE

**Tel:** 01258 459665

**E:** [david@davidnorton.me.uk](mailto:david@davidnorton.me.uk)

**W:** <http://davidnorton.me.uk/>



## 5. Sue Fawthrop Painter-Semi Abstract Landscape and Coast

Vibrant works in oil, acrylic, watercolour and mixed media  
Large garden studio in rural setting excellent local pub and good walking country.

**Directions:** Leave Blandford via West Street, passing The Crown on your right, straight across the roundabout, second right to Winterbourne Stickland. Follow road for 4 miles, at T junction turn right. After 1 mile, turn left signed Ansty and continue to follow the Ansty signs until you pass The Fox Inn on your left. Brewery Cottage is 50 metres further on the right. Park on the drive.

**Accessibility:** Disabled access

**Open:** Saturdays, Sundays, and Monday 27th; 11am- 5pm and during the week by appointment. . Brewery Cottage, Ansty Dorchester Dorset DT2 7PN

**Tel:** 01258 881189

**E:** [sue.fawthrop@btopenworld.com](mailto:sue.fawthrop@btopenworld.com)

**W:** [www.suefawthrop.me.uk](http://www.suefawthrop.me.uk)

## 3. Vanessa Stanfield

Printmaker,  
Specialising in  
Collagraphy



**Directions:** Leave Blandford in Westerly direction over R. Stour. Passing Bryanston gates on right, up Dorchester Hill signed 'No through Rd'. House on left at top. Gravelled drive easy parking and access. Food at The Stour Inn.

**Open:** Sat. 25<sup>th</sup> Sun. 26<sup>th</sup> Mon. 27<sup>th</sup> May  
Sun: 1<sup>st</sup> June

**Times:** 10-12.30pm and 2-4.30pm. Other times by arrangement

**Badgerswalk,** Dorchester Hill, Blandford St Mary,  
BLANDFORD DT11 9AB

**Tel:** 01258 452379

**E:** [vanessa.badgerswalk@gmail.com](mailto:vanessa.badgerswalk@gmail.com)

## 6. Sue Bates

Sue paints gloriously blowsy watercolours.



**Directions:** From Blandford take the second turn to Shroton off the A350. If you get to Iwerne Minster you have missed it. House on right after crossroads. Park on drive. Easy access to gallery, steps up to studio. Cricketers pub, and footpaths to Hambledon Hill nearby.

**Open:** Monday 27th May, Saturday and Sunday 1st/2nd June. 11am-4pm

**Fieldways,** Telegraph Street, Shroton,  
Blandford Forum DT11 8QQ

**Tel:** 01258 861863

**E:** [suebates359@gmail.com](mailto:suebates359@gmail.com)

**W:** [www.suebates.net](http://www.suebates.net)

## 4. Eleanor Spencer Norman

Painter/printmaker  
Working studio.  
Inspirations from  
Purbeck coastline and  
surrounding  
countryside.



### Directions:

A357, Blandford to Sturminster Newton Road. Through Shillingstone, to crossroads, left to Okeford Fitzpaine and right to Hammoon. Straight across little roundabout, last house on left, before bridge. From Child Okeford, first house on right after bridge. Easy Parking. Flat access.

**Open:** Sat.25<sup>th</sup>, Sun. 26<sup>th</sup>, Mon. 27<sup>th</sup> May.  
Sat.1<sup>st</sup>, Sun. 2<sup>nd</sup> June 10am-4pm

**Firefly House,** Hammoon  
Sturminster Newton  
Dorset DT10 2DB

**Tel:** 01258 863700

**E:** [eleanornorman@btinternet.com](mailto:eleanornorman@btinternet.com)

## 7. Catherine Pitchford

Printmaker inspired by the Dorset landscape and Jurassic coast using lino, drypoint, solar etching, mono and collagraph



**Directions:** as you come into Charlton Marshall from Blandford the Charlton Marshall pub is on the left. Pass the speed camera on the right, next road on your right is Green Close. As you turn into Green Close it is the first bungalow on your left and there is plenty of street parking.

**Open:** 10am-4pm each day **except** Wednesday 29<sup>th</sup> May.

1, Green Close, Charlton Marshall. Blandford Forum. DT11 9PF

**Tel:** 01245 456748

**E:** [catherineannepitchford@gmail.com](mailto:catherineannepitchford@gmail.com)